

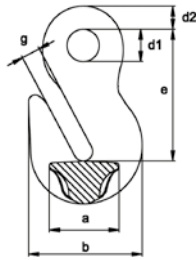
Sling Hooks

Super Alloy Chain Ø		Eye Sling Hook with Forged Safety Latch	Clevis Sling Hook with Forged Safety Latch	Wide Bowl Clevis Sling Hook with Forged Safety Latch	Eye Self Locking Hook	Clevis Self Locking Hook	Swivel Safety Locking Hook	Foundry Hook
SA		HS	HKS	VHKS	HSB	HKSB	WSB	GH
mm	inch	Code	Code	Code	Code	Code	Code	Code
6	1/4	HS 06.8 U	HKS 06.8 U		HSB 06.8	HKSB 06.8 U	WSB 06.8	
7	9/32	HS 07/8.8 U	HKS 07/8.8 U	VHKS 07/8.8	HSB 07/8.8	HKSB 07/8.8 U	WSB 07/8.8	GH 07/8.8
8	5/16	HS 07/8.8 U	HKS 07/8.8 U	VHKS 07/8.8	HSB 07/8.8	HKSB 07/8.8 U	WSB 07/8.8	GH 07/8.8
10	3/8	HS 10.8 U	HKS 10.8 U	VHKS 10.8	HSB 10.8	HKSB 10.8 U	WSB 10.8	GH 10.8
13	1/2	HS 13.8 U	HKS 13.8 U		HSB 13.8	HKSB 13.8 U	WSB 13.8	GH 13.8
16	5/8	HS 16.8 U	HKS 16.8 U		HSB 16.8	HKSB 16.8 U	WSB 16.8	GH 16.8
18	11/16	HS 20.8 U			HSB 20.8			GH 20.8
20	3/4	HS 20.8 U	HKS 20.8 U		HSB 20.8			GH 20.8
22	7/8	HS 22.8 U	HKS 22.8 U		HSB 22.8			
26	1	HS 26.8 U						
32	1 1/4	HS 32.8 U						
Page 42		Page 46	Page 46	Page 46	Page 46	Page 47	Page 47	Page 47

Special Accessories

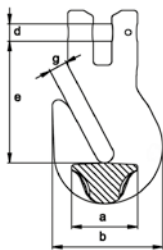
Weld-on Hook	Ratchet Load Binder with Grab Hooks	Ratchet Load Binder
HAS	RLSP	RLS
Code	Code	Code
HAS 1.3	RLSP 08	RLS 08
HAS 3.8	RLSP 10	RLS 10
HAS 6.3	RLSP 13	RLS 13
HAS 10		
Page 48	Page 48	Page 48

Eye Grab Hook P



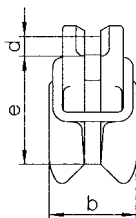
Chain		Code	Measurements						Weight	Working Load Limit
mm	inch		g	d2	d1	e	a	b		
6	1/4	P 06.8 *	7	9	12	50	26	41	0.14	1,120
7+8	9/32+5/16	P 07/8.8 *	9	12	16	65	34	55	0.35	2,000
10	3/8	P 10.8 *	12	14	20	77	46	69	0.65	3,150
13	1/2	P 13.8 *	15	19	26	101	60	89	1.44	5,300
16	5/8	P 16.8 *	19	23	32	121	70	110	2.40	8,000
18+20	11/16+3/4	P 20.8	25	27	36	151	84	150	6.15	12,500
22	7/8	P 22.8	27	31	42	170	91	165	8.30	15,000
26	1	P 26.8	32	37	50	201	107	195	13.80	21,200
32	1 1/4	P 32.8	39	44	60	245	139	231	20.27	31,500

Clevis Grab Hook PK



Chain		Code	Measurements					Weight	Working Load Limit
mm	inch		g	d	e	a	b		
7+8	9/32+5/16	PK 07/8.8 *	9	9	63	34	55	0.40	2,000
10	3/8	PK 10.8 *	12	12.5	78	46	69	0.79	3,150
13	1/2	PK 13.8 *	15	16	93	60	89	1.61	5,300
16	5/8	PK 16.8 *	19	20	115	70	110	3.00	8,000
20	3/4	PK 20.8	25	24	141	84	150	6.15	12,500

Clevis Shortening Clutch VKL



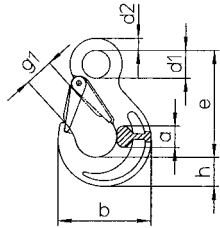
Chain		Code	Measurements			Weight	Working Load Limit
mm	inch		e	b	d		
6	1/4	VKL 06.8	45	36	7.4	0.27	1,120
7	9/32	VKL 07.8	58	44	9	0.5	1,500
8	5/16	VKL 08.8	58	44	10	0.5	2,000
10	3/8	VKL 10.8	70	55	12.5	0.8	3,150
13	1/2	VKL 13.8 ¹⁾	90	70	16	1.53	5,300

¹⁾ clevis connector with bent hitch pin, see figure



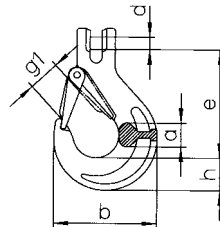
- Warning Instructions:**
- only load the inside chain
 - only to be used with safety device
 - make sure that the chain fits properly

Eye Sling Hook with Forged Safety Latch HS



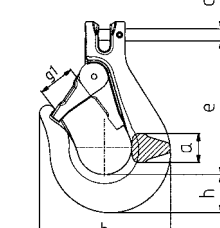
Chain		Code	Measurements								Weight	Working Load Limit
mm	inch		g1	d2	d1	e	a	h	b			
6	1/4	HS 06.8 U	19	10	20	85	17	21	68	0.34	1,120	
7+8	9/32+5/16	HS 07/8.8 U	26	11	25	106	19	27	88	0.60	2,000	
10	3/8	HS 10.8 U	31	16	34	131	26	33	109	1.25	3,150	
13	1/2	HS 13.8 U	39	19	43	164	33	44	134	2.36	5,300	
16	5/8	HS 16.8 U	45	25	50	183	40	50	155	3.77	8,000	
18+20	11/16+3/4	HS 20.8 U	53	27	55	205	48	55	178	6.01	12,500	
22	7/8	HS 22.8 U	62	29	60	225	50	62	196	8.19	15,000	
26	1	HS 26.8 U	62	37	70	260	70	62	235	12.76	21,200	
32	1 1/4	HS 32.8 U	87	37	70	299	87	97	291	22.31	31,500	

Clevis Sling Hook with Forged Safety Latch HKS



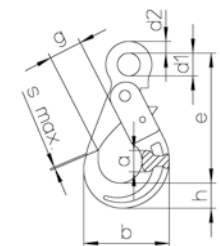
Chain		Code	Measurements						Weight	Working Load Limit
mm	inch		g1	a	h	d	e	b		
6	1/4	HKS 06.8 U	19	15	20	7.4	69	66	0.29	1,120
7+8	9/32+5/16	HKS 07/8.8 U	26	19	28	9	95	90	0.63	2,000
10	3/8	HKS 10.8 U	31	25	35	12.5	109	108	1.14	3,150
13	1/2	HKS 13.8 U	39	34	41	16	136	131	2.25	5,300
16	5/8	HKS 16.8 U	45	37	49	20	155	153	3.69	8,000
20	3/4	HKS 20.8 U	53	51	53	24	184	177	5.60	12,500
22	7/8	HKS 22.8 U	62	52	62	27	214	196	9.13	15,000

Wide Bowl Clevis Sling Hook with Forged Safety Latch VHKS



Chain		Code	Measurements						Weight	Working Load Limit
mm	inch		e	h	a	d	g1	b		
7+8	9/32+5/16	VHKS 07/8.8	116	33	25	9	32	113	1.26	2,000

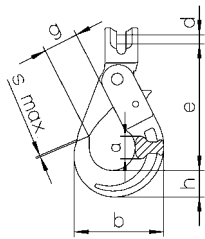
Eye Self Locking Hook HSB



Not for welded system!

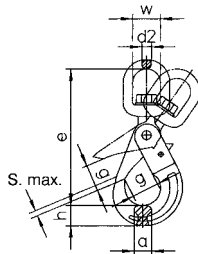
Chain		Code	Measurements								Weight	Working Load Limit
mm	inch		g	d2	d1	e	b	a	h	s max.		
6	1/4	HSB 06.8	28	11	21	110	71	17	20	1	0.52	1,120
7+8	9/32+5/16	HSB 07/8.8	34	12	25	136	88	20	26	1	0.92	2,000
10	3/8	HSB 10.8	45	17	32	169	107	29	30	1	1.57	3,150
13	1/2	HSB 13.8	52	20	40	205	138	35	40	1.5	3.19	5,300
16	5/8	HSB 16.8	60	27	50	251	168	41	50	2	6.24	8,000
18+20	11/16+3/4	HSB 20.8	70	30	60	290	194	50	62	2	9.75	12,500
22	7/8	HSB 22.8	81	32	70	322	211	52	62	2	11.45	15,000

Clevis Self Locking Hook HKSB



Chain		Code	Measurements						S max.	Weight	Working Load Limit
mm	inch		g	d	e	a	b	h			
6	1/4	HKSB 06.8 U	28	7.4	94	17	71	20	1	0.56	1,120
7+8	9/32+5/16	HKSB 07/8.8 U	34	9	123	20	88	26	1	0.87	2,000
10	3/8	HKSB 10.8 U	45	12.5	144	29	107	30	1	1.61	3,150
13	1/2	HKSB 13.8 U	52	16	180	35	138	40	1.5	3.24	5,300
16	5/8	HKSB 16.8 U	60	20	218	41	168	50	2	5.96	8,000

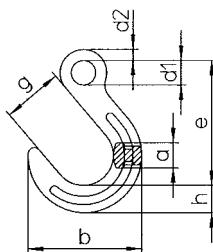
Swivel Self Locking Hook WSB



Chain		Code	Measurements						S max.	Weight	Working Load Limit
mm	inch		e	h	d2	w	a	g			
6	1/4	WSB 06.8	161	20	12	35	16	28	1	1.20	1,120
7+8	9/32+5/16	WSB 07/8.8	182	26	12	35	20	34	1	1.54	2,000
10	3/8	WSB 10.8	218	30	16	42	25	45	1	2.14	3,150
13	1/2	WSB 13.8	269	40	20	49	35	52	1.5	4.42	5,300
16	5/8	WSB 16.8	319	50	24	60	35	60	2	7.34	8,000

Standard type can not be swivelled when loaded. Not for welded system!

Foundry Hook GH



Chain		Code	Measurements							Weight	Working Load Limit
mm	inch		g	d2	d1	e	a	h	b		
7+8	9/32+5/16	GH 07/8.8	64	11	24	131	25	29	118	0.94	2,000
10	3/8	GH 10.8	76	14	31	158	32	35	143	1.69	3,150
13	1/2	GH 13.8	89	17	39	190	40	42	170	2.89	5,300
16	5/8	GH 16.8	102	22	47	224	46	50	200	5.17	8,000
18+20	11/16+3/4	GH 20.8	114	28	56	260	54	61	231	9.20	12,500