



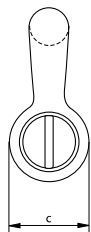
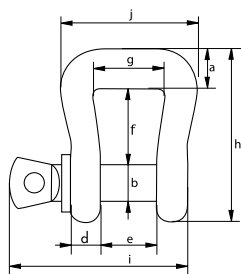
## Green Pin® Web Sling Shackle SC

Shackle for synthetic web slings with screw collar pin

- **Material:** bow and pin alloy steel, grade 8, quenched and tempered
- **Safety Factor:** MBL equals 6 x WLL
- **Standard:** ASME B30.26
- **Finish:** painted green
- **Temperature Range:** -40°C up to 200°C
- **Certification:** 2.1 2.2 3.1 CE



P-5461



working load limit	diameter bow	diameter pin	diameter eye	width eye	width inside	length inside	width inside	length	length bolt	width	weight each
t	a mm	b mm	c mm	d mm	e mm	f mm	g mm	h mm	i mm	j mm	kg
3.25	20	19	40	16	27	38	35	87	89	68	0.66
4.75	24	22	46	19	31	48	46	106	103	85	1.1
6.5	27	25	52	22	36	72	62	137	119	109	1.79
8.5	31	28	59	25	43	84	79	158	137	134	2.79

In inch

working load limit	diameter bow	diameter pin	diameter eye	width eye	width inside	length inside	width inside	length	length bolt	width	weight each
t	a inch	b inch	c inch	d inch	e inch	f inch	g inch	h inch	i inch	j inch	lbs
3.25	$\frac{25}{32}$	$\frac{3}{4}$	$1 \frac{9}{16}$	$\frac{5}{8}$	$1 \frac{1}{16}$	$1 \frac{1}{2}$	$1 \frac{3}{8}$	$3 \frac{7}{16}$	$3 \frac{1}{2}$	$2 \frac{11}{16}$	1.46
4.75	$\frac{15}{16}$	$\frac{7}{8}$	$1 \frac{13}{16}$	$\frac{3}{4}$	$1 \frac{7}{32}$	$1 \frac{7}{8}$	$1 \frac{13}{16}$	$4 \frac{3}{16}$	$4 \frac{1}{16}$	$3 \frac{11}{32}$	2.42
6.5	$1 \frac{1}{16}$	1	$2 \frac{1}{16}$	$\frac{7}{8}$	$1 \frac{13}{32}$	$2 \frac{27}{32}$	$2 \frac{7}{16}$	$5 \frac{13}{32}$	$4 \frac{11}{16}$	$4 \frac{9}{32}$	3.95
8.5	$1 \frac{7}{32}$	$1 \frac{1}{8}$	$2 \frac{5}{16}$	$\frac{31}{32}$	$1 \frac{11}{16}$	$3 \frac{5}{16}$	$3 \frac{1}{8}$	$6 \frac{7}{32}$	$5 \frac{13}{32}$	$5 \frac{9}{32}$	6.04