

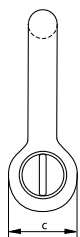
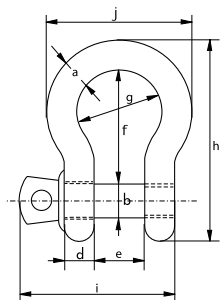


Green Pin Super® Bow Shackle SC

Grade 8 bow shackle with screw pin



G-5261



- **Material:** bow and pin alloy steel, grade 8, quenched and tempered
- **Safety Factor:** MBL equals 5 x WLL
- **Standard:** ASME B30.26 and meets performance requirements of US Fed. Spec. RR-C-271 Type IVA Class 2, grade B
- **Finish:** hot dipped galvanized
- **Temperature Range:** -20°C up to +200°C
- **Certification:** [2.1](#) [2.2](#) [3.1](#) [MTC[®]](#) [CE](#) [ABS PDA](#) [ABS MA](#)

working load limit	diameter body	diameter pin	diameter eye	width eye	width inside	length inside	width bow	length	length bolt	width	weight each
t	a mm	b mm	c mm	d mm	e mm	f mm	g mm	h mm	i mm	j mm	kg
3.3	13.5	16	34	13	22	51	32	89	73	58	0.36
5	16	19	40	16	27	64	43	110	89	75	0.63
7	19	22	46	19	31	76	51	129	103	89	1.01
9.5	22	25	52	22	36	83	58	144	119	102	1.5
12.5	25	28	59	25	43	95	68	164	137	118	2.21

In inch

working load limit	diameter body	diameter pin	diameter eye	width eye	width inside	length inside	width bow	length	length bolt	width	weight each
t	a inch	b inch	c inch	d inch	e inch	f inch	g inch	h inch	i inch	j inch	lbs
3.3	1/2	5/8	1 11/32	1/2	7/8	2	1 1/4	3 1/2	2 7/8	2 9/32	0.79
5	5/8	3/4	1 9/16	5/8	1 1/16	2 17/32	1 11/16	4 11/32	3 1/2	2 15/16	1.38
7	3/4	7/8	1 13/16	3/4	1 7/32	3	2	5 3/32	4 1/16	3 1/2	2.22
9.5	7/8	1	2 1/16	7/8	1 13/32	3 9/32	2 9/32	5 21/32	4 11/16	4 1/32	3.31
12.5	1	1 1/8	2 5/16	31/32	1 11/16	3 3/4	2 11/16	6 15/32	5 13/32	4 21/32	4.86

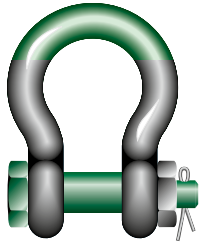
CAD RFID



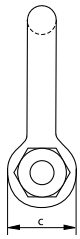
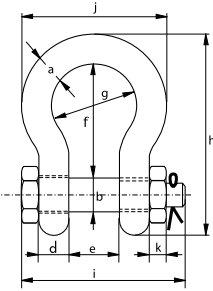


Green Pin Super® Bow Shackle BN

Grade 8 bow shackle with safety bolt



G-5263



- **Material:** bow and pin alloy steel, grade 8, quenched and tempered
- **Safety Factor:** MBL equals 5 x WLL
- **Standard:** ASME B30.26 and meets performance requirements of US Fed. Spec. RR-C-271 Type IVA Class 3, grade B
- **Finish:** hot dipped galvanized (175 ton shackle is painted)
- **Temperature Range:** -20°C up to +200°C
- **Certification:** 2.1 2.2 3.1 MTC^a MTC^b * LROS * CE ABS PDA ABS MA

working load limit	diameter bow	diameter pin	diameter eye	width eye	width inside	length inside	width bow	length	length bolt	width	thickness nut	weight each
t	a mm	b mm	c mm	d mm	e mm	f mm	g mm	h mm	i mm	j mm	k mm	kg
3.3	13.5	16	34	13	22	51	32	89	82	58	13	0.40
5	16	19	40	16	27	64	43	110	98	75	17	0.73
7	19	22	46	19	31	76	51	129	114	89	19	1.19
9.5	22	25	52	22	36	83	58	144	130	102	22	1.73
12.5	25	28	59	25	43	95	68	164	150	118	25	2.56
15	28	32	66	28	47	108	75	185	166	131	27	3.6
18	32	35	72	32	51	115	83	201	178	147	30	4.95
21	35	38	80	35	57	133	92	227	197	162	33	6.62
30	38	42	88	38	60	146	99	249	217	175	34	8.11
40	45	50	103	45	74	178	126	300	260	216	40	15
55	57	57	117	57	83	197	138	341	303	252	46	23
85	70	70	143	70	105	260	180	437	363	320	56	44
120	83	83	162	83	127	329	190	535	425	356	66	72
150**	95	95	208	95	147	400	238	647	524	428	50	112
175**	105	108	238	105	169	410	275	688	567	485	50	160

In inch

working load limit	diameter bow	diameter pin	diameter eye	width eye	width inside	length inside	width bow	length	length bolt	width	thickness nut	weight each
t	a inch	b inch	c inch	d inch	e inch	f inch	g inch	h inch	i inch	j inch	k inch	lbs
3.3	1/2	5/8	1 11/32	1/2	7/8	2	1 1/4	3 1/2	3 7/32	2 9/32	1/2	0.88
5	5/8	3/4	1 9/16	5/8	1 1/16	2 17/32	1 11/16	4 11/32	3 27/32	2 15/16	21/32	1.61
7	3/4	7/8	1 13/16	3/4	1 7/32	3	2	5 3/32	4 1/2	3 1/2	3/4	2.62
9.5	7/8	1	2 1/16	7/8	1 13/32	3 9/32	2 9/32	5 21/32	5 1/8	4 1/32	7/8	3.81
12.5	1	1 1/8	2 5/16	31/32	1 11/16	3 3/4	2 11/16	6 15/32	5 29/32	4 21/32	31/32	5.64
15	1 1/8	1 1/4	2 19/32	1 3/32	1 27/32	4 1/4	2 15/16	7 9/32	6 17/32	5 5/32	1 1/16	7.94
18	1 1/4	1 3/8	2 27/32	1 1/4	2	4 17/32	3 9/32	7 29/32	7	5 25/32	1 3/16	10.91
21	1 3/8	1 1/2	3 5/32	1 3/8	2 1/4	5 1/4	3 5/8	8 15/16	7 3/4	6 3/8	1 5/16	14.59
30	1 1/2	1 5/8	3 15/32	1 1/2	2 3/8	5 3/4	3 29/32	9 13/16	8 17/32	6 7/8	1 5/16	17.88
40	1 3/4	2	4 1/16	1 25/32	2 29/32	7	4 31/32	11 13/16	10 1/4	8 1/2	1 9/16	33.07
55	2	2 1/4	4 19/32	2 1/4	3 9/32	7 3/4	5 7/16	13 7/16	11 15/16	9 29/32	1 25/32	50.71
85	2 1/2	2 3/4	5 5/8	2 3/4	4 1/8	10 1/4	7 3/32	17 7/32	14 9/32	12 19/32	2 7/32	97
120	3	3 1/4	6 3/8	3 9/32	5	12 15/16	7 15/32	21 1/16	16 23/32	14 1/32	2 5/8	158.73
150**	3 3/4	3 3/4	8 3/16	3 3/4	5 25/32	15 3/4	9 3/8	25 15/32	20 5/8	16 27/32	1 31/32	246.92
175**	4	4 1/4	9 3/8	4 1/8	6 21/32	16 5/32	10 13/16	27 3/32	22 5/16	19 3/32	1 31/32	352.74

CAD RFID



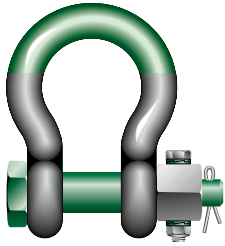
- * For shackles ≥ WLL 150t
- ** With round headed bolt
- ** Excluded from ABS Type Approval



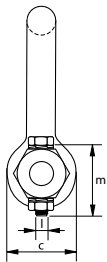
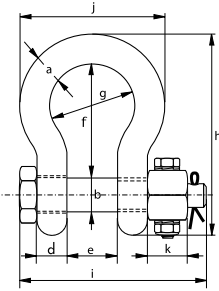
Green Pin Super® Bow Shackle FN

Grade 8 bow shackle with safety bolt and fixed nut

- **Material:** bow and pin alloy steel, grade 8, quenched and tempered
- **Safety Factor:** MBL equals 5 x WLL
- **Standard:** ASME B30.26 and meets performance requirements of US Fed. Spec. RR-C-271 Type IVA Class 3, grade B
- **Finish:** hot dipped galvanized (175 ton shackle is painted)
- **Temperature Range:** -20°C up to +200°C
- **Certification:** 2.1 2.2 3.1 MTC^a MTC^b * LROS * CE



G-5243



working load limit	diameter bow	diameter pin	diameter eye	width eye	width inside	length inside	width bow	length	length bolt	width	thickness nut	securing bolt thread	securing bolt length	torque	weight each
t	a mm	b mm	c mm	d mm	e mm	f mm	g mm	h mm	i mm	j mm	k mm	l mm	m mm	Nm	kg
3.3	13.5	16	34	13	22	51	32	89	82	58	13	M6	35	8.4	0.40
5	16	19	40	16	27	64	43	110	98	75	17	M6	40	8.4	0.73
7	19	22	46	19	31	76	51	129	114	89	19	M6	45	8.4	1.19
9.5	22	25	52	22	36	83	58	144	130	102	22	M8	50	20	1.73
12.5	25	28	59	25	43	95	68	164	150	118	25	M8	55	20	2.56
15	28	32	66	28	47	108	75	185	166	131	27	M10	60	39	3.6
18	32	35	72	32	51	115	83	201	178	147	30	M10	65	39	4.95
21	35	38	80	35	57	133	92	227	197	162	33	M10	70	39	6.62
30	38	42	88	38	60	146	99	249	217	175	34	M8	75	20	8.11
40	45	50	103	45	74	178	126	300	260	216	40	M8	90	20	15
55	57	57	117	57	83	197	138	341	303	252	46	M10	100	39	23
85	70	70	143	70	105	260	180	437	363	320	56	M12	120	68	44
120	83	83	162	83	127	329	190	535	425	356	66	M12	140	68	72
150**	95	95	208	95	147	400	238	647	524	428	50	M12	150	68	112
175**	105	108	238	105	169	410	275	688	567	485	50	M12	160	68	160

In inch

working load limit	diameter bow	diameter pin	diameter eye	width eye	width inside	length inside	width bow	length	length bolt	width	thickness nut	securing bolt thread	securing bolt length	torque	weight each
t	a inch	b inch	c inch	d inch	e inch	f inch	g inch	h inch	i inch	j inch	k inch	l mm	m inch	ft lb	lbs
3.3	1/2	5/8	1 11/32	1/2	7/8	2	1 1/4	3 1/2	3 7/32	2 9/32	1/2	M6	1 3/8	6.2	0.88
5	5/8	3/4	1 9/16	5/8	1 1/16	2 17/32	1 11/16	4 11/32	3 27/32	2 15/16	2 1/32	M6	1 9/16	6.2	1.61
7	3/4	7/8	1 13/16	3/4	1 7/32	3	2	5 3/32	4 1/2	3 1/2	3/4	M6	1 25/32	6.2	2.62
9.5	7/8	1	2 1/16	7/8	1 13/32	3 9/32	2 9/32	5 21/32	5 1/8	4 1/32	7/8	M8	1 31/32	14.7	3.81
12.5	1	1 1/8	2 5/16	31/32	1 11/16	3 3/4	2 11/16	6 15/32	5 29/32	4 21/32	31/32	M8	2 5/32	14.7	5.64
15	1 1/8	1 1/4	2 19/32	1 3/32	1 27/32	4 1/4	2 15/16	7 9/32	6 17/32	5 5/32	1 1/16	M10	2 3/8	28.7	7.94
18	1 1/4	1 3/8	2 27/32	1 1/4	2	4 17/32	3 9/32	7 29/32	7	5 25/32	1 3/16	M10	2 9/16	28.7	10.91
21	1 3/8	1 1/2	3 5/32	1 3/8	2 1/4	5 1/4	3 5/8	8 15/16	7 3/4	6 3/8	1 5/16	M10	2 3/4	28.7	14.59
30	1 1/2	1 5/8	3 15/32	1 1/2	2 3/8	5 3/4	3 29/32	9 13/16	8 17/32	6 7/8	1 5/16	M8	2 15/16	14.7	17.88
40	1 3/4	2	4 1/16	1 25/32	2 29/32	7	4 31/32	11 13/16	10 1/4	8 1/2	1 9/16	M8	3 17/32	14.7	33.07
55	2	2 1/4	4 19/32	2 1/4	3 9/32	7 3/4	5 7/16	13 7/16	11 15/16	9 29/32	1 25/32	M10	3 15/16	28.7	50.71
85	2 1/2	2 3/4	5 5/8	2 3/4	4 1/8	10 1/4	7 3/32	17 7/32	14 9/32	12 19/32	2 7/32	M12	4 23/32	50.1	97
120	3	3 1/4	6 3/8	3 9/32	5	12 15/16	7 15/32	21 1/16	16 23/32	14 1/32	2 5/8	M12	5 1/2	50.1	158.73
150**	3 3/4	3 3/4	8 3/16	3 3/4	5 25/32	15 3/4	9 3/8	25 15/32	20 5/8	16 27/32	1 31/32	M12	5 29/32	50.1	246.92
175**	4	4 1/4	9 3/8	4 1/8	6 21/32	16 5/32	10 13/16	27 3/32	22 5/16	19 3/32	1 31/32	M12	6 5/16	50.1	352.74

* For shackles ≥ WLL 150t

** With round headed bolt