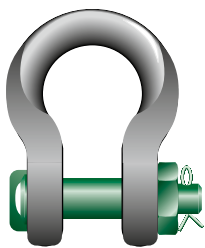




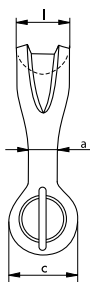
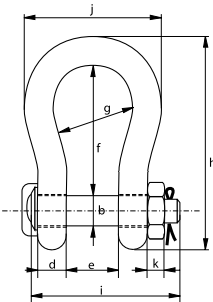
## Green Pin® Sling Shackle BN

### High load capacity bow shackle with safety bolt

- **Material:** bow and pin alloy steel, grade 8, quenched and tempered
- **Safety Factor:** MBL equals 5 x WLL
- **Finish:** shackle bow painted silver, pin painted green (7 up to 55 ton shackles are hot dipped galvanized)
- **Temperature Range:** -20°C up to +200°C
- **Certification:** 2.1 2.2 3.1 MTC<sup>b</sup> \* LROS \* MPI<sup>b</sup> \* US<sup>b</sup> \* CE



P-6033



working load limit	diameter body	diameter pin	diameter eye	width eye	width inside	length inside	width bow	length	length bolt	width	thickness nut	bearing surface	weight each
t	a mm	b mm	c mm	d mm	e mm	f mm	g mm	h mm	i mm	j mm	k mm	l mm	kg
7	22	22	46	19	32	96	64	153	115	110	19	41	2
12.5	28	28	61	25	44	121	82	197	151	146	24	54	4
18	35	35	69	30	54	148	102	239	175	180	29	64	7
30	40	42	90	35	69	165	126	279	211	200	34	79	13
40	55	51	109	45	84	199	140	331	252	235	38	97	21
55	60	57	115	55	90	240	160	389	299	270	45	100	30
75	68	70	125	54	110	290	185	473	317	317	40	120	45
125	85	80	154	85	137	366	220	583	413	390	40	150	84
150	94	95	179	89	147	391	253	645	445	434	50	170	117
200	110	105	199	100	158	481	280	759	480	482	50	205	179
250	126	120	227	110	179	542	300	859	535	530	60	240	260
300	135	134	245	122	195	601	350	947	590	620	70	265	350
400	160	160	293	145	231	576	370	985	675	690	80	320	580
500	170	180	328	160	263	681	450	1131	748	790	90	339	780
600	190	200	348	170	289	741	490	1234	809	865	100	370	980
700	200	215	392	190	315	751	540	1284	879	901	100	400	1360
800	218	230	420	200	342	851	554	1426	942	947	110	420	1430
900	242	255	466	220	368	851	580	1488	1023	1023	120	440	1650
1000	260	270	490	240	399	851	614	1532	1103	1107	120	460	2970
1250	285	300	510	260	452	931	650	1666	1227	1182	150	530	3700
1550	285	320	550	280	483	950	680	1710	1300	1253	150	560	4000

In inch

working load limit	diameter body	diameter pin	diameter eye	width eye	width inside	length inside	width bow	length	length bolt	width	thickness nut	bearing surface	weight each
t	a inch	b inch	c inch	d inch	e inch	f inch	g inch	h inch	i inch	j inch	k inch	l inch	lbs
7	7/8	7/8	1 13/16	3/4	1 9/32	3 25/32	2 17/32	6	4 17/32	4 5/16	3/4	1 5/8	4.41
12.5	1 1/8	1 1/8	2 3/8	1	1 3/4	4 3/4	3 1/4	7 3/4	5 15/16	5 3/4	15/16	2 1/8	8.82
18	1 3/8	1 3/8	2 23/32	1 3/16	2 1/8	5 13/16	4 1/32	9 13/32	6 7/8	7 3/32	1 5/32	2 17/32	18
30	1 9/16	1 21/32	3 17/32	1 3/8	2 23/32	6 1/2	4 31/32	10 31/32	8 5/16	7 7/8	1 11/32	3 1/8	29
40	2 5/32	2	4 9/32	1 25/32	3 5/16	7 27/32	5 1/2	13 1/32	9 29/32	9 1/4	1 1/2	3 13/16	46
55	2 3/8	2 1/4	4 17/32	2 5/32	3 17/32	9 7/16	6 5/16	15 5/16	11 25/32	10 5/8	1 25/32	3 15/16	66
75	2 11/16	2 3/4	4 29/32	2 1/8	4 11/32	11 13/32	7 9/32	18 5/8	12 15/32	12 15/32	1 9/16	4 23/32	99
125	3 11/32	3 5/32	6 1/16	3 11/32	5 13/32	14 13/32	8 21/32	22 15/16	16 1/4	15 11/32	1 9/16	5 29/32	185
150	3 11/16	3 3/4	7 1/16	3 1/2	5 25/32	15 13/32	9 31/32	25 13/32	17 17/32	17 3/32	1 31/32	6 11/16	257
200	4 11/32	4 1/8	7 27/32	3 15/16	6 7/32	18 15/16	11 1/32	29 7/8	18 29/32	18 31/32	1 31/32	8 1/16	395
250	4 31/32	4 23/32	8 15/16	4 11/32	7 1/16	21 11/32	11 13/16	33 13/16	21 1/16	20 7/8	2 3/8	9 7/16	571
300	5 5/16	5 9/32	9 21/32	4 13/16	7 11/16	23 21/32	13 25/32	37 9/32	23 7/32	24 13/32	2 3/4	10 7/16	770
400	6 5/16	6 5/16	11 17/32	5 23/32	9 3/32	22 11/16	14 9/16	38 25/32	26 9/16	27 5/32	3 5/32	12 19/32	1279
500	6 11/16	7 3/32	12 29/32	6 5/16	10 11/32	26 13/16	17 23/32	44 17/32	29 7/16	31 3/32	3 17/32	13 11/32	1720
600	7 15/32	7 7/8	13 11/16	6 11/16	11 3/8	29 3/16	19 9/32	48 19/32	31 27/32	34 1/16	3 15/16	14 9/16	2161
700	7 7/8	8 15/32	15 7/16	7 15/32	12 13/32	29 9/16	21 1/4	50 9/16	34 19/32	35 15/32	3 15/16	15 3/4	2998
800	8 19/32	9 1/16	16 17/32	7 7/8	13 15/32	33 1/2	21 13/16	56 5/32	37 3/32	37 9/32	4 11/32	16 17/32	3153
900	9 17/32	10 1/32	18 11/32	8 21/32	14 1/2	33 1/2	22 27/32	58 19/32	40 9/32	40 9/32	4 23/32	17 5/16	3638
1000	10 1/4	10 5/8	19 9/32	9 7/16	15 23/32	33 1/2	24 3/16	60 5/16	43 7/16	43 19/32	4 23/32	18 1/8	6548
1250	11 7/32	11 13/16	20 3/32	10 1/4	17 25/32	36 21/32	25 19/32	65 19/32	48 5/16	46 17/32	5 29/32	20 7/8	8157
1550	11 7/32	12 19/32	21 21/32	11 1/32	19 1/32	37 13/32	26 25/32	67 5/16	51 3/16	49 11/32	5 29/32	22 1/16	8818

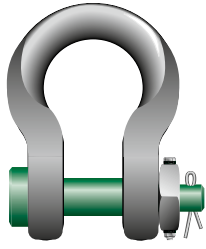
CAD RFID

\* For shackles ≥ WLL 75 t

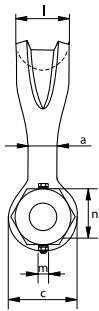
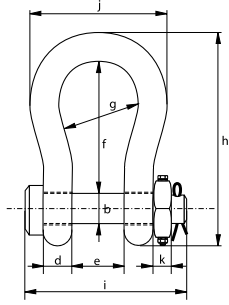


# Green Pin® Sling Shackle FN

High load capacity bow shackle with safety bolt and fixed nut



P-6013



- **Material:** bow and pin alloy steel, grade 8, quenched and tempered
- **Safety Factor:** MBL equals 5 x WLL
- **Finish:** shackle bow painted silver, pin painted green (7 up to 55 ton shackles are hot dipped galvanized)
- **Temperature Range:** -20°C up to +200°C
- **Certification:** 2.1 2.2 3.1 MTC<sup>b</sup> \* LROS \* MPI<sup>b</sup> \* US<sup>b</sup> \* CE

working load limit	diameter body	diameter pin	diameter eye	width eye	width inside	length inside	width bow	length bow	length bolt	width	thickness nut	bearing surface	securing bolt thread	securing bolt length	torque	weight each
t	a	b	c	d	e	f	g	h	i	j	k	l	m	n	Nm	kg
7	22	22	46	19	32	96	64	153	115	110	19	41	M6	45	8.4	2
12.5	28	28	61	25	44	121	82	197	151	146	24	54	M8	50	20	4
18	35	35	69	30	54	148	102	239	175	180	29	64	M10	65	39	8
30	40	42	90	35	69	165	126	279	211	200	34	79	M6	75	8.4	13
40	55	51	109	45	84	199	140	331	252	235	38	97	M8	90	20	21
55	60	57	115	55	90	240	160	389	299	270	45	100	M10	100	39	30
75	68	70	125	54	110	290	185	473	317	317	40	120	M12	120	68	45
125	85	80	154	85	137	366	220	583	413	390	40	150	M12	130	68	84
150	94	95	179	89	147	391	253	645	445	434	50	170	M12	140	68	117

In inch

working load limit	diameter body	diameter pin	diameter eye	width eye	width inside	length inside	width bow	length bow	length bolt	width	thickness nut	bearing surface	securing bolt thread	securing bolt length	torque	weight each
t	a	b	c	d	e	f	g	h	i	j	k	l	m	n	ft lb	lbs
7	7/8	7/8	1 13/16	3/4	1 9/32	3 25/32	2 17/32	6	4 17/32	4 5/16	3/4	1 5/8	M6	1 25/32	6.2	4.41
12.5	1 1/8	1 1/8	2 3/8	1	1 3/4	4 3/4	3 1/4	7 3/4	5 15/16	5 3/4	15/16	2 1/8	M8	1 31/32	14.7	8.82
18	1 3/8	1 3/8	2 23/32	1 3/16	2 1/8	5 13/16	4 1/32	9 13/32	6 7/8	7 3/32	1 5/32	2 17/32	M10	2 9/16	28.7	18
30	1 9/16	1 21/32	3 17/32	1 3/8	2 23/32	6 1/2	4 31/32	10 31/32	8 5/16	7 7/8	1 11/32	3 1/8	M6	2 15/16	6.2	29
40	2 5/32	2	4 9/32	1 25/32	3 5/16	7 27/32	5 1/2	13 1/32	9 29/32	9 1/4	1 1/2	3 13/16	M8	3 17/32	14.7	46
55	2 3/8	2 1/4	4 17/32	2 5/32	3 17/32	9 7/16	6 5/16	15 5/16	11 25/32	10 5/8	1 25/32	3 15/16	M10	3 15/16	28.7	66
75	2 11/16	2 3/4	4 29/32	2 1/8	4 11/32	11 13/32	7 9/32	18 5/8	12 15/32	12 15/32	1 9/16	4 23/32	M12	4 23/32	50.1	99
125	3 11/32	3 5/32	6 1/16	3 11/32	5 13/32	14 13/32	8 21/32	22 15/16	16 1/4	15 11/32	1 9/16	5 29/32	M12	5 1/8	50.1	185
150	3 11/16	3 3/4	7 1/16	3 1/2	5 25/32	15 13/32	9 31/32	25 13/32	17 17/32	17 3/32	1 31/32	6 11/16	M12	5 1/2	50.1	257

\* For shackles ≥ WLL 75 t