

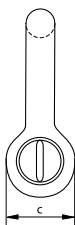
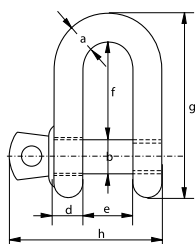


Green Pin® Dee Shackle SC

Standard dee shackle with screw collar pin



G-4151



- **Material:** bow and pin high tensile steel, grade 6, quenched and tempered
- **Safety Factor:** MBL equals 6 x WLL
- **Standard:** EN13889 and meets performance requirements of US Fed. Spec. RR-C-271 Type IVB Class 3, grade A, from 2 t upward these shackles comply with ASME B30.26
- **Finish:** hot dipped galvanized
- **Temperature Range:** -40°C up to +200°C
- **Certification:** 2.1 2.2 3.1 MTC[®] DNV GL 0378 CE ABS PDA ABS MA

| working load limit | diameter bow | diameter pin | diameter eye | width eye | width inside | length inside | length | length bolt | weight each |
|--------------------|--------------|--------------|--------------|-----------|--------------|---------------|--------|-------------|-------------|
| t | a mm | b mm | c mm | d mm | e mm | f mm | g mm | h mm | kg |
| 0.33 | 5 | 6 | 12 | 5 | 9.5 | 19 | 33 | 29.5 | 0.02 |
| 0.5 | 7 | 8 | 16.5 | 7 | 12 | 22 | 41.5 | 38 | 0.05 |
| 0.75 | 9 | 10 | 20 | 9 | 13.5 | 26 | 50 | 46.5 | 0.09 |
| 1 | 10 | 11 | 22.5 | 10 | 17 | 32 | 59 | 54 | 0.14 |
| 1.5 | 11 | 13 | 26.5 | 11 | 19 | 37 | 68 | 59.5 | 0.19 |
| 2 | 13.5 | 16 | 34 | 13 | 22 | 43 | 81 | 73 | 0.32 |
| 3.25 | 16 | 19 | 40 | 16 | 27 | 51 | 97 | 89 | 0.54 |
| 4.75 | 19 | 22 | 46 | 19 | 31 | 59 | 112 | 103 | 0.87 |
| 6.5 | 22 | 25 | 52 | 22 | 36 | 73 | 134 | 119 | 1.34 |
| 8.5 | 25 | 28 | 59 | 25 | 43 | 85 | 154 | 137 | 2.08 |
| 9.5 | 28 | 32 | 66 | 28 | 47 | 90 | 167 | 153 | 2.77 |
| 12 | 32 | 35 | 72 | 32 | 51 | 94 | 180 | 170 | 3.72 |
| 13.5 | 35 | 38 | 80 | 35 | 57 | 115 | 209 | 186 | 5.14 |
| 17 | 38 | 42 | 88 | 38 | 60 | 127 | 230 | 203 | 6.85 |
| 25 | 45 | 50 | 103 | 45 | 74 | 149 | 271 | 243 | 11.45 |
| 35 | 50 | 57 | 111 | 50 | 83 | 171 | 305 | 272 | 16.86 |
| 42.5 | 57 | 65 | 130 | 57 | 95 | 190 | 345 | 310 | 24.61 |
| 55 | 65 | 70 | 145 | 65 | 105 | 203 | 376 | 344 | 32.65 |

In inch

| working load limit | diameter bow | diameter pin | diameter eye | width eye | width inside | length inside | length | length bolt | weight each |
|--------------------|----------------|-----------------|------------------|------------------|------------------|------------------|-------------------|-------------------|-------------|
| t | a inch | b inch | c inch | d inch | e inch | f inch | g inch | h inch | lbs |
| 0.33 | $\frac{3}{16}$ | $\frac{1}{4}$ | $\frac{15}{32}$ | $\frac{3}{16}$ | $\frac{3}{8}$ | $\frac{3}{4}$ | $1\frac{5}{16}$ | $1\frac{5}{32}$ | 0.04 |
| 0.5 | $\frac{1}{4}$ | $\frac{5}{16}$ | $\frac{21}{32}$ | $\frac{9}{32}$ | $\frac{15}{32}$ | $\frac{7}{8}$ | $1\frac{5}{8}$ | $1\frac{1}{2}$ | 0.11 |
| 0.75 | $\frac{5}{16}$ | $\frac{3}{8}$ | $\frac{25}{32}$ | $\frac{11}{32}$ | $\frac{17}{32}$ | $1\frac{1}{32}$ | $1\frac{31}{32}$ | $1\frac{27}{32}$ | 0.2 |
| 1 | $\frac{3}{8}$ | $\frac{7}{16}$ | $\frac{7}{8}$ | $\frac{13}{32}$ | $\frac{21}{32}$ | $1\frac{1}{4}$ | $2\frac{5}{16}$ | $2\frac{1}{8}$ | 0.3 |
| 1.5 | $\frac{7}{16}$ | $\frac{1}{2}$ | $1\frac{1}{32}$ | $\frac{7}{16}$ | $\frac{3}{4}$ | $1\frac{15}{32}$ | $2\frac{11}{16}$ | $2\frac{11}{32}$ | 0.42 |
| 2 | $\frac{1}{2}$ | $\frac{5}{8}$ | $1\frac{11}{32}$ | $\frac{1}{2}$ | $\frac{7}{8}$ | $1\frac{11}{16}$ | $3\frac{3}{16}$ | $2\frac{7}{8}$ | 0.7 |
| 3.25 | $\frac{5}{8}$ | $\frac{3}{4}$ | $1\frac{9}{16}$ | $\frac{5}{8}$ | $1\frac{1}{16}$ | 2 | $3\frac{13}{16}$ | $3\frac{1}{2}$ | 1.19 |
| 4.75 | $\frac{3}{4}$ | $\frac{7}{8}$ | $1\frac{13}{16}$ | $\frac{3}{4}$ | $1\frac{7}{32}$ | $2\frac{5}{16}$ | $4\frac{13}{32}$ | $4\frac{1}{16}$ | 1.92 |
| 6.5 | $\frac{7}{8}$ | 1 | $2\frac{1}{16}$ | $\frac{7}{8}$ | $1\frac{13}{32}$ | $2\frac{7}{8}$ | $5\frac{9}{32}$ | $4\frac{11}{16}$ | 2.95 |
| 8.5 | 1 | $1\frac{1}{8}$ | $2\frac{5}{16}$ | $\frac{31}{32}$ | $1\frac{11}{16}$ | $3\frac{11}{32}$ | $6\frac{1}{16}$ | $5\frac{13}{32}$ | 4.59 |
| 9.5 | $1\frac{1}{8}$ | $1\frac{1}{4}$ | $2\frac{19}{32}$ | $1\frac{3}{32}$ | $1\frac{27}{32}$ | $3\frac{17}{32}$ | $6\frac{9}{16}$ | $6\frac{1}{32}$ | 6.1 |
| 12 | $1\frac{1}{4}$ | $1\frac{3}{8}$ | $2\frac{27}{32}$ | $1\frac{1}{4}$ | 2 | $3\frac{11}{16}$ | $7\frac{3}{32}$ | $6\frac{11}{16}$ | 8.2 |
| 13.5 | $1\frac{3}{8}$ | $1\frac{1}{2}$ | $3\frac{5}{32}$ | $1\frac{3}{8}$ | $2\frac{1}{4}$ | $4\frac{17}{32}$ | $8\frac{7}{32}$ | $7\frac{5}{16}$ | 11.33 |
| 17 | $1\frac{1}{2}$ | $1\frac{5}{8}$ | $3\frac{15}{32}$ | $1\frac{1}{2}$ | $2\frac{3}{8}$ | 5 | $9\frac{1}{16}$ | 8 | 15.1 |
| 25 | $1\frac{3}{4}$ | 2 | $4\frac{1}{16}$ | $1\frac{25}{32}$ | $2\frac{29}{32}$ | $5\frac{7}{8}$ | $10\frac{21}{32}$ | $9\frac{9}{16}$ | 25.23 |
| 35 | 2 | $2\frac{1}{4}$ | $4\frac{3}{8}$ | $1\frac{31}{32}$ | $3\frac{9}{32}$ | $6\frac{23}{32}$ | 12 | $10\frac{23}{32}$ | 37.17 |
| 42.5 | $2\frac{1}{4}$ | $2\frac{9}{16}$ | $5\frac{1}{8}$ | $2\frac{1}{4}$ | $3\frac{3}{4}$ | $7\frac{15}{32}$ | $13\frac{19}{32}$ | $12\frac{7}{32}$ | 54.26 |
| 55 | $2\frac{1}{2}$ | $2\frac{3}{4}$ | $5\frac{23}{32}$ | $2\frac{9}{16}$ | $4\frac{1}{8}$ | 8 | $14\frac{13}{16}$ | $13\frac{17}{32}$ | 71.98 |

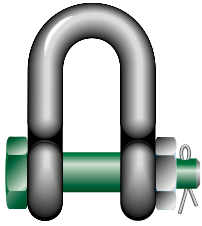


CAD RFID

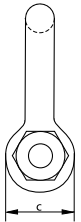
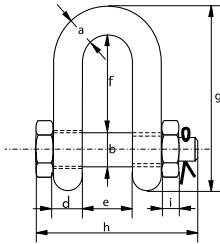


Green Pin® Dee Shackle BN

Standard dee shackle with safety bolt



G-4153



- **Material:** bow and pin high tensile steel, grade 6, quenched and tempered
- **Safety Factor:** MBL equals 6 x WLL
- **Standard:** EN 13889, ASME B30.26 and meets performance requirements of US Fed. Spec. RR-C-271 Type IVB Class 3, grade A
- **Finish:** hot dipped galvanized
- **Temperature Range:** -40°C up to +200°C
- **Certification:** 2.1 2.2 3.1 MTC⁹ DNV GL 2.7-1⁹ * DNV GL 2.7-1⁹ * DNV GL 0378 CE ABS PDA ABS MA

| working load limit | diameter bow | diameter pin | diameter eye | width eye | width inside | length inside | length | length bolt | thickness nut | weight each |
|--------------------|--------------|--------------|--------------|-----------|--------------|---------------|--------|-------------|---------------|-------------|
| t | a mm | b mm | c mm | d mm | e mm | f mm | g mm | h mm | i mm | kg |
| 2 | 13.5 | 16 | 34 | 13 | 22 | 43 | 81 | 82 | 13 | 0.39 |
| 3.25 | 16 | 19 | 40 | 16 | 27 | 51 | 97 | 98 | 17 | 0.67 |
| 4.75 | 19 | 22 | 46 | 19 | 31 | 59 | 112 | 114 | 19 | 1.08 |
| 6.5 | 22 | 25 | 52 | 22 | 36 | 73 | 134 | 130 | 22 | 1.66 |
| 8.5 | 25 | 28 | 59 | 25 | 43 | 85 | 154 | 150 | 25 | 2.46 |
| 9.5 | 28 | 32 | 66 | 28 | 47 | 90 | 167 | 166 | 27 | 3.4 |
| 12 | 32 | 35 | 72 | 32 | 51 | 94 | 180 | 178 | 30 | 4.51 |
| 13.5 | 35 | 38 | 80 | 35 | 57 | 115 | 209 | 197 | 33 | 6.1 |
| 17 | 38 | 42 | 88 | 38 | 60 | 127 | 230 | 202 | 19 | 7.63 |
| 25 | 45 | 50 | 103 | 45 | 74 | 149 | 271 | 249 | 23 | 12.88 |
| 35 | 50 | 57 | 111 | 50 | 83 | 171 | 305 | 269 | 26 | 17.35 |
| 42.5 | 57 | 65 | 130 | 57 | 95 | 190 | 345 | 301 | 29 | 25.94 |
| 55 | 65 | 70 | 145 | 65 | 105 | 203 | 376 | 330 | 32 | 35.33 |
| 85 | 75 | 83 | 162 | 73 | 127 | 229 | 427 | 380 | 39 | 52.97 |

In inch

| working load limit | diameter bow | diameter pin | diameter eye | width eye | width inside | length inside | length | length bolt | thickness nut | weight each |
|--------------------|--------------|--------------|--------------|-----------|--------------|---------------|----------|-------------|---------------|-------------|
| t | a inch | b inch | c inch | d inch | e inch | f inch | g inch | h inch | i inch | lbs |
| 2 | 1/2 | 5/8 | 1 11/32 | 1/2 | 7/8 | 1 11/16 | 3 3/16 | 3 7/32 | 1/2 | 0.85 |
| 3.25 | 5/8 | 3/4 | 1 9/16 | 5/8 | 1 1/16 | 2 | 3 13/16 | 3 27/32 | 21/32 | 1.48 |
| 4.75 | 3/4 | 7/8 | 1 13/16 | 3/4 | 1 7/32 | 2 5/16 | 4 13/32 | 4 1/2 | 3/4 | 2.39 |
| 6.5 | 7/8 | 1 | 2 1/16 | 7/8 | 1 13/32 | 2 7/8 | 5 9/32 | 5 1/8 | 7/8 | 3.66 |
| 8.5 | 1 | 1 1/8 | 2 5/16 | 31/32 | 1 11/16 | 3 11/32 | 6 1/16 | 5 29/32 | 31/32 | 5.42 |
| 9.5 | 1 1/8 | 1 1/4 | 2 19/32 | 1 3/32 | 1 27/32 | 3 17/32 | 6 9/16 | 6 17/32 | 1 1/16 | 7.5 |
| 12 | 1 1/4 | 1 3/8 | 2 27/32 | 1 1/4 | 2 | 3 11/16 | 7 3/32 | 7 | 1 3/16 | 9.95 |
| 13.5 | 1 3/8 | 1 1/2 | 3 5/32 | 1 3/8 | 2 1/4 | 4 17/32 | 8 7/32 | 7 3/4 | 1 5/16 | 13.45 |
| 17 | 1 1/2 | 1 5/8 | 3 15/32 | 1 1/2 | 2 3/8 | 5 | 9 1/16 | 7 15/16 | 3/4 | 16.82 |
| 25 | 1 3/4 | 2 | 4 1/16 | 1 25/32 | 2 29/32 | 5 7/8 | 10 21/32 | 9 13/16 | 29/32 | 28.4 |
| 35 | 2 | 2 1/4 | 4 3/8 | 1 31/32 | 3 9/32 | 6 23/32 | 12 | 10 19/32 | 1 1/32 | 38.25 |
| 42.5 | 2 1/4 | 2 9/16 | 5 1/8 | 2 1/4 | 3 3/4 | 7 15/32 | 13 19/32 | 11 27/32 | 1 5/32 | 57.19 |
| 55 | 2 1/2 | 2 3/4 | 5 23/32 | 2 9/16 | 4 1/8 | 8 | 14 13/16 | 13 | 1 1/4 | 77.89 |
| 85 | 3 | 3 1/4 | 6 3/8 | 2 7/8 | 5 | 9 1/32 | 16 13/16 | 14 31/32 | 1 17/32 | 116.77 |

CAD RFID

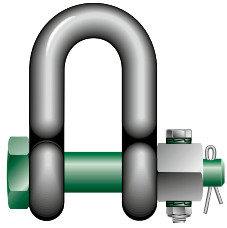


* For shackles ≥ WLL 2 t

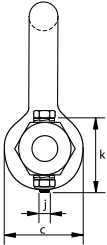
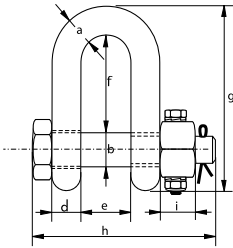


Green Pin® Dee Shackle FN

Standard dee shackle with safety bolt and fixed nut



G-4133



- **Material:** bow and pin high tensile steel, grade 6, quenched and tempered
- **Safety Factor:** MBL equals 6 x WLL
- **Standard:** EN 13889, ASME B30.26 and meets performance requirements of US Fed. Spec. RR-C-271 Type IVB Class 3, grade A
- **Finish:** hot dipped galvanized
- **Temperature Range:** -40°C up to +200°C
- **Certification:** 2.1 2.2 3.1 MTC³ DNV GL 2.7-1³ DNV GL 2.7-1³ CE

| working load limit | diameter bow | diameter pin | diameter eye | width eye | width inside | length inside | length | length bolt | thickness nut | securing bolt thread | securing bolt length | torque | weight each |
|--------------------|--------------|--------------|--------------|-----------|--------------|---------------|--------|-------------|---------------|----------------------|----------------------|--------|-------------|
| t | a mm | b mm | c mm | d mm | e mm | f mm | g mm | h mm | i mm | j mm | k mm | Nm | kg |
| 2 | 13.5 | 16 | 34 | 13 | 22 | 43 | 81 | 82 | 13 | M6 | 35 | 8.4 | 0.39 |
| 3.25 | 16 | 19 | 40 | 16 | 27 | 51 | 97 | 98 | 17 | M6 | 40 | 8.4 | 0.67 |
| 4.75 | 19 | 22 | 46 | 19 | 31 | 59 | 112 | 114 | 19 | M6 | 45 | 8.4 | 1.08 |
| 6.5 | 22 | 25 | 52 | 22 | 36 | 73 | 134 | 130 | 22 | M8 | 50 | 20 | 1.66 |
| 8.5 | 25 | 28 | 59 | 25 | 43 | 85 | 154 | 150 | 25 | M8 | 55 | 20 | 2.46 |
| 9.5 | 28 | 32 | 66 | 28 | 47 | 90 | 167 | 166 | 27 | M10 | 60 | 39 | 3.4 |
| 12 | 32 | 35 | 72 | 32 | 51 | 94 | 180 | 178 | 30 | M10 | 65 | 39 | 4.51 |
| 13.5 | 35 | 38 | 80 | 35 | 57 | 115 | 209 | 197 | 33 | M10 | 70 | 39 | 6.1 |
| 17 | 38 | 42 | 88 | 38 | 60 | 127 | 230 | 202 | 19 | M8 | 75 | 20 | 7.63 |
| 25 | 45 | 50 | 103 | 45 | 74 | 149 | 271 | 249 | 23 | M8 | 90 | 20 | 13.25 |
| 35 | 50 | 57 | 111 | 50 | 83 | 171 | 305 | 269 | 26 | M10 | 100 | 39 | 18.53 |
| 42.5 | 57 | 65 | 130 | 57 | 95 | 190 | 345 | 301 | 29 | M12 | 110 | 68 | 25.94 |
| 55 | 65 | 70 | 145 | 65 | 105 | 203 | 376 | 330 | 32 | M12 | 120 | 68 | 35.33 |
| 85 | 75 | 83 | 162 | 73 | 127 | 229 | 427 | 380 | 39 | M12 | 140 | 68 | 52.97 |

In inch

| working load limit | diameter bow | diameter pin | diameter eye | width eye | width inside | length inside | length | length bolt | thickness nut | securing bolt thread | securing bolt length | torque | weight each |
|--------------------|--------------|--------------|--------------|-----------|--------------|---------------|----------|-------------|---------------|----------------------|----------------------|--------|-------------|
| t | a inch | b inch | c inch | d inch | e inch | f inch | g inch | h inch | i inch | j mm | k inch | ft lb | lbs |
| 2 | 1/2 | 5/8 | 1 11/32 | 1/2 | 7/8 | 1 11/16 | 3 3/16 | 3 7/32 | 1/2 | M6 | 1 3/8 | 6.2 | 0.85 |
| 3.25 | 5/8 | 3/4 | 1 9/16 | 5/8 | 1 1/16 | 2 | 3 13/16 | 3 27/32 | 2 1/32 | M6 | 1 9/16 | 6.2 | 1.48 |
| 4.75 | 3/4 | 7/8 | 1 13/16 | 3/4 | 1 7/32 | 2 5/16 | 4 13/32 | 4 1/2 | 3/4 | M6 | 1 25/32 | 6.2 | 2.39 |
| 6.5 | 7/8 | 1 | 2 1/16 | 7/8 | 1 13/32 | 2 7/8 | 5 9/32 | 5 1/8 | 7/8 | M8 | 1 31/32 | 14.7 | 3.66 |
| 8.5 | 1 | 1 1/8 | 2 5/16 | 31/32 | 1 11/16 | 3 11/32 | 6 1/16 | 5 29/32 | 31/32 | M8 | 2 5/32 | 14.7 | 5.42 |
| 9.5 | 1 1/8 | 1 1/4 | 2 19/32 | 1 3/32 | 1 27/32 | 3 17/32 | 6 9/16 | 6 17/32 | 1 1/16 | M10 | 2 3/8 | 28.7 | 7.5 |
| 12 | 1 1/4 | 1 3/8 | 2 27/32 | 1 1/4 | 2 | 3 11/16 | 7 3/32 | 7 | 1 3/16 | M10 | 2 9/16 | 28.7 | 9.95 |
| 13.5 | 1 3/8 | 1 1/2 | 3 5/32 | 1 3/8 | 2 1/4 | 4 17/32 | 8 7/32 | 7 3/4 | 1 5/16 | M10 | 2 3/4 | 28.7 | 13.45 |
| 17 | 1 1/2 | 1 5/8 | 3 15/32 | 1 1/2 | 2 3/8 | 5 | 9 1/16 | 7 15/16 | 3/4 | M8 | 2 15/16 | 14.7 | 16.82 |
| 25 | 1 3/4 | 2 | 4 1/16 | 1 25/32 | 2 29/32 | 5 7/8 | 10 21/32 | 9 13/16 | 29/32 | M8 | 3 17/32 | 14.7 | 29.21 |
| 35 | 2 | 2 1/4 | 4 3/8 | 1 31/32 | 3 9/32 | 6 23/32 | 12 | 10 19/32 | 1 1/32 | M10 | 3 15/16 | 28.7 | 40.86 |
| 42.5 | 2 1/4 | 2 9/16 | 5 1/8 | 2 1/4 | 3 3/4 | 7 15/32 | 13 19/32 | 11 27/32 | 1 5/32 | M12 | 4 11/32 | 50.1 | 57.19 |
| 55 | 2 1/2 | 2 3/4 | 5 23/32 | 2 9/16 | 4 1/8 | 8 | 14 13/16 | 13 | 1 1/4 | M12 | 4 23/32 | 50.1 | 77.89 |
| 85 | 3 | 3 1/4 | 6 3/8 | 2 7/8 | 5 | 9 1/32 | 16 13/16 | 14 31/32 | 1 17/32 | M12 | 5 1/2 | 50.1 | 116.77 |

