

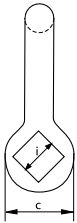
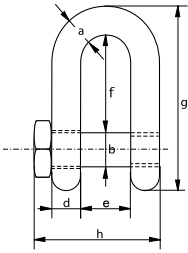


Green Pin® Fishing Dee Shackle SQ

Dee shackle with square headed screw pin



G-4154



- **Material:** bow and pin high tensile steel, grade 6, quenched and tempered
- **Safety Factor:** MBL equals 6 x WLL
- **Standard:** EN 13889, ASME B30.26 and meets performance requirements of US Fed. Spec. RR-C-271, grade A
- **Finish:** hot dipped galvanized
- **Certification:** 2.1 2.2 3.1 MTC³ CE

working load limit	diameter bow	diameter pin	diameter eye	width eye	width inside	length inside	length	length bolt	width bolt head	weight each
t	a mm	b mm	c mm	d mm	e mm	f mm	g mm	h mm	i mm	kg
2	13.5	16	34	13	22	43	81	57.5	22	0.32
3.25	16	19	40	16	27	51	97	71	27	0.58
4.75	19	22	46	19	31	59	112	82	32	0.92
6.5	22	25	52	22	36	73	134	93	32	1.33
8.5	25	28	59	25	43	85	154	108	36	2.03
9.5	28	32	66	28	47	90	167	120	41	2.88
12	32	35	72	32	51	94	180	137	50	3.96
13.5	35	38	80	35	57	115	209	149	50	5.24
17	38	42	88	38	60	127	230	164	60	6.8
25	45	50	103	45	74	149	271	192	60	11.22

In inch

working load limit	diameter bow	diameter pin	diameter eye	width eye	width inside	length inside	length	length bolt	width bolt head	weight each
t	a inch	b inch	c inch	d inch	e inch	f inch	g inch	h inch	i inch	lbs
2	1/2	5/8	1 11/32	1/2	7/8	1 11/16	3 3/16	2 1/4	7/8	0.7
3.25	5/8	3/4	1 9/16	5/8	1 1/16	2	3 13/16	2 25/32	1 1/16	1.28
4.75	3/4	7/8	1 13/16	3/4	1 7/32	2 5/16	4 13/32	3 7/32	1 1/4	2.03
6.5	7/8	1	2 1/16	7/8	1 13/32	2 7/8	5 9/32	3 21/32	1 1/4	2.93
8.5	1	1 1/8	2 5/16	31/32	1 11/16	3 11/32	6 1/16	4 1/4	1 13/32	4.48
9.5	1 1/8	1 1/4	2 19/32	1 3/32	1 27/32	3 17/32	6 9/16	4 23/32	1 5/8	6.35
12	1 1/4	1 3/8	2 27/32	1 1/4	2	3 11/16	7 3/32	5 13/32	1 31/32	8.72
13.5	1 3/8	1 1/2	3 5/32	1 3/8	2 1/4	4 17/32	8 7/32	5 7/8	1 31/32	11.56
17	1 1/2	1 5/8	3 15/32	1 1/2	2 3/8	5	9 1/16	6 15/32	2 3/8	15
25	1 3/4	2	4 1/16	1 25/32	2 29/32	5 7/8	10 21/32	7 9/16	2 3/8	24.74



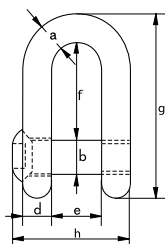
Green Pin® Fishing Dee Shackle FP

Dee shackle with square sunken hole screw pin (flush pin)

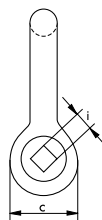
- **Material:** bow and pin high tensile steel, grade 6, quenched and tempered
- **Safety Factor:** MBL equals 6 x WLL
- **Standard:** EN 13889, ASME B30.26 and meets performance requirements of US Fed. Spec. RR-C-271, grade A
- **Finish:** hot dipped galvanized
- **Certification:** 2.1 2.2 3.1 MTC³ CE
- **Note:** key for unscrewing the pin must be ordered separately



G-4159



working load limit	diameter bow	diameter pin	diameter eye	width eye	width inside	length inside	length	length bolt	size hole head	weight each
t	a mm	b mm	c mm	d mm	e mm	f mm	g mm	h mm	i mm	kg
2	13.5	16	34	13	22	43	81	51	11	0.34
3.25	16	19	40	16	27	51	97	63	11	0.6
4.75	19	22	46	19	31	59	112	74	11	0.98
6.5	22	25	52	22	36	73	134	85	13	1.26
8.5	25	28	59	25	43	85	154	99	13	2.14
9.5	28	32	66	28	47	90	167	110	17	3.05
12	32	35	72	32	51	94	180	122	17	3.56
17	38	42	88	38	60	127	230	145	17	6.84



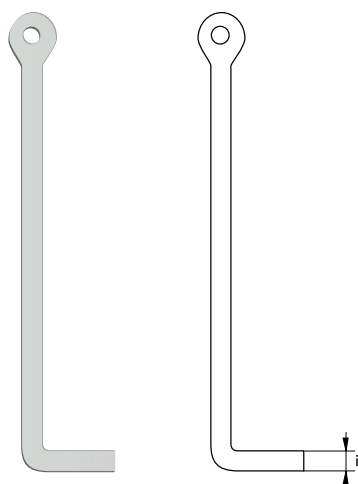
In inch

working load limit	diameter bow	diameter pin	diameter eye	width eye	width inside	length inside	length	length bolt	size hole head	weight each
t	a inch	b inch	c inch	d inch	e inch	f inch	g inch	h inch	i inch	lbs
2	1/2	5/8	1 11/32	1/2	7/8	1 11/16	3 3/16	2	7/16	0.75
3.25	5/8	3/4	1 9/16	5/8	1 1/16	2	3 13/16	2 15/32	7/16	1.33
4.75	3/4	7/8	1 13/16	3/4	1 7/32	2 5/16	4 13/32	2 29/32	7/16	2.15
6.5	7/8	1	2 1/16	7/8	1 13/32	2 7/8	5 9/32	3 11/32	1/2	2.77
8.5	1	1 1/8	2 5/16	1 3/32	1 11/16	3 11/32	6 1/16	3 29/32	1/2	4.72
9.5	1 1/8	1 1/4	2 19/32	1 3/32	1 27/32	3 17/32	6 9/16	4 11/32	21/32	6.72
12	1 1/4	1 3/8	2 27/32	1 1/4	2	3 11/16	7 3/32	4 13/16	21/32	7.84
17	1 1/2	1 5/8	3 15/32	1 1/2	2 3/8	5	9 1/16	5 23/32	21/32	15.08

E-4170

Green Pin® Sunken Hole Key

Accessory for fishing shackle with square sunken hole



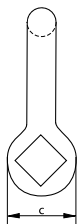
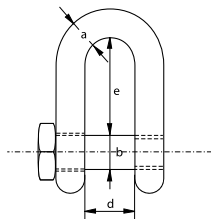
C

Fishing Shackles

Dee shackle with square head screw pin



P-3754



- **Material:** mild steel
- **Safety factor:** MBL equals 5 x WLL
- **Finish:** painted blue
- **Certification:** 2.1 2.2

working load limit	diameter bow	diameter pin	diameter eye	width inside	length inside	weight each
t	a mm	b mm	c mm	d mm	e mm	kg
1.5	13	16	32	25	48	0.36
2.5	16	20	40	32	64	0.69
3	20	22	48	38	75	1.18
4	22	25	53	44	83	1.61