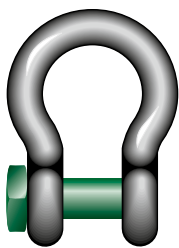


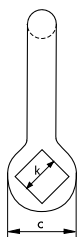
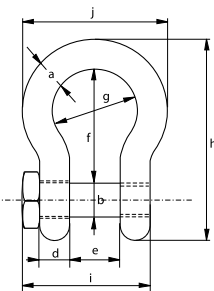


Green Pin® Fishing Bow Shackle SQ

Bow shackle with square headed screw pin



G-4164



- **Material:** bow and pin high tensile steel, grade 6, quenched and tempered
- **Safety Factor:** MBL equals 6 x WLL
- **Standard:** EN 13889, ASME B30.26 and meets performance requirements of US Fed. Spec. RR-C-271, grade A
- **Finish:** hot dipped galvanized
- **Certification:** 2.1 2.2 3.1 MTC[®] CE

working load limit	diameter bow	diameter pin	diameter eye	width eye	width inside	length inside	width bow	length	length bolt	width	width bolt head	weight each
t	a mm	b mm	c mm	d mm	e mm	f mm	g mm	h mm	i mm	j mm	k mm	kg
2	13.5	16	34	13	22	51	32	89	57.5	58	22	0.34
3.25	16	19	40	16	27	64	43	110	71	75	27	0.63
4.75	19	22	46	19	31	76	51	129	82	89	32	1
6.5	22	25	52	22	36	83	58	144	93	102	32	1.44
8.5	25	28	59	25	43	95	68	164	108	118	36	2.21
9.5	28	32	66	28	47	108	75	185	120	131	41	3.18
12	32	35	72	32	51	115	83	201	137	147	50	4.32
13.5	35	38	80	35	57	133	92	227	149	162	50	5.67
17	38	42	88	38	60	146	99	249	164	175	60	7.36
25	45	50	103	45	74	178	126	300	192	216	60	12.38

In inch

working load limit	diameter bow	diameter pin	diameter eye	width eye	width inside	length inside	width bow	length	length bolt	width	width bolt head	weight each
t	a inch	b inch	c inch	d inch	e inch	f inch	g inch	h inch	i inch	j inch	k inch	lbs
2	1/2	5/8	1 11/32	1/2	7/8	2	1 1/4	3 1/2	2 1/4	2 9/32	7/8	0.75
3.25	5/8	3/4	1 9/16	5/8	1 1/16	2 17/32	1 11/16	4 11/32	2 25/32	2 15/16	1 1/16	1.39
4.75	3/4	7/8	1 13/16	3/4	1 7/32	3	2	5 3/32	3 7/32	3 1/2	1 1/4	2.21
6.5	7/8	1	2 1/16	7/8	1 13/32	3 9/32	2 9/32	5 21/32	3 21/32	4 1/32	1 1/4	3.17
8.5	1	1 1/8	2 5/16	31/32	1 11/16	3 3/4	2 11/16	6 15/32	4 1/4	4 21/32	1 13/32	4.86
9.5	1 1/8	1 1/4	2 19/32	1 3/32	1 27/32	4 1/4	2 15/16	7 9/32	4 23/32	5 5/32	1 5/8	7.01
12	1 1/4	1 3/8	2 27/32	1 1/4	2	4 17/32	3 9/32	7 29/32	5 13/32	5 25/32	1 31/32	9.52
13.5	1 3/8	1 1/2	3 5/32	1 3/8	2 1/4	5 1/4	3 5/8	8 15/16	5 7/8	6 3/8	1 31/32	12.49
17	1 1/2	1 5/8	3 15/32	1 1/2	2 3/8	5 3/4	3 29/32	9 13/16	6 15/32	6 7/8	2 3/8	16.23
25	1 3/4	2	4 1/16	1 25/32	2 29/32	7	4 31/32	11 13/16	7 9/16	8 1/2	2 3/8	27.29

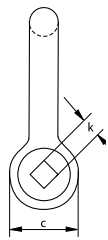
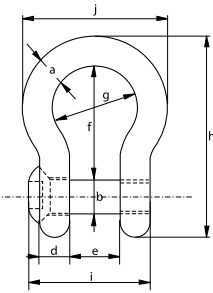


Green Pin® Fishing Bow Shackle FP

Bow shackle with square sunken hole screw pin (flush pin)



G-4169



- **Material:** bow and pin high tensile steel, grade 6, quenched and tempered
- **Safety Factor:** MBL equals 6 x WLL
- **Standard:** EN 13889, ASME B30.26 and meets performance requirements of US Fed. Spec. RR-C-271, grade A
- **Finish:** hot dipped galvanized
- **Certification:** 2.1 2.2 3.1 MTC® CE
- **Note:** key for unscrewing the pin must be ordered separately

working load limit	diameter bow	diameter pin	diameter eye	width eye	width inside	length inside	width bow	length	length bolt	width	size hole head	weight each
t	a mm	b mm	c mm	d mm	e mm	f mm	g mm	h mm	i mm	j mm	k mm	kg
2	13.5	16	34	13	22	51	32	89	51	58	11	0.31
3.25	16	19	40	16	27	64	43	110	63	75	11	0.56
4.75	19	22	46	19	31	76	51	129	74	89	11	0.98
6.5	22	25	52	22	36	83	58	144	85	102	13	1.46
8.5	25	28	59	25	43	95	68	164	99	118	13	2.18
9.5	28	32	66	28	47	108	75	185	110	131	17	3.06
12	32	35	72	32	51	115	83	201	122	147	17	4.24
17	38	42	88	38	60	146	99	249	145	175	17	7.37

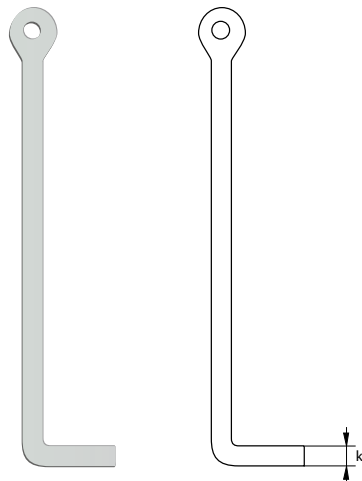
In inch

working load limit	diameter bow	diameter pin	diameter eye	width eye	width inside	length inside	width bow	length	length bolt	width	size hole head	weight each
t	a inch	b inch	c inch	d inch	e inch	f inch	g inch	h inch	i inch	j inch	k inch	lbs
2	1/2	5/8	1 11/32	1/2	7/8	2	1 1/4	3 1/2	2	2 9/32	7/16	0.68
3.25	5/8	3/4	1 9/16	5/8	1 1/16	2 17/32	1 11/16	4 11/32	2 15/32	2 15/16	7/16	1.23
4.75	3/4	7/8	1 13/16	3/4	1 7/32	3	2	5 3/32	2 29/32	3 1/2	7/16	2.16
6.5	7/8	1	2 1/16	7/8	1 13/32	3 9/32	2 9/32	5 21/32	3 11/32	4 1/32	1/2	3.22
8.5	1	1 1/8	2 5/16	31/32	1 11/16	3 3/4	2 11/16	6 15/32	3 29/32	4 21/32	1/2	4.81
9.5	1 1/8	1 1/4	2 19/32	1 3/32	1 27/32	4 1/4	2 15/16	7 9/32	4 11/32	5 5/32	21/32	6.75
12	1 1/4	1 3/8	2 27/32	1 1/4	2	4 17/32	3 9/32	7 29/32	4 13/16	5 25/32	21/32	9.35
17	1 1/2	1 5/8	3 15/32	1 1/2	2 3/8	5 3/4	3 29/32	9 13/16	5 23/32	6 7/8	21/32	16.25

E-4170

Green Pin® Sunken Hole Key

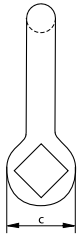
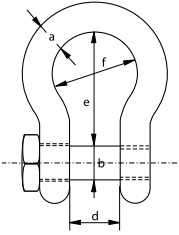
Accessory for fishing shackle with square sunken hole



C



P-3764



Fishing Shackles

Bow shackle with square head screw pin

- **Material:** mild steel
- **Safety factor:** MBL equals 5 x WLL
- **Finish:** painted blue
- **Certification:** 2.1 2.2

working load limit	diameter bow	diameter pin	diameter eye	width inside	length inside	width bow	weight each
t	a mm	b mm	c mm	d mm	e mm	f mm	kg
1.5	13	16	32	25	48	36	0.37
2.5	16	20	40	32	64	48	0.71
3	20	22	48	38	79	60	1.24